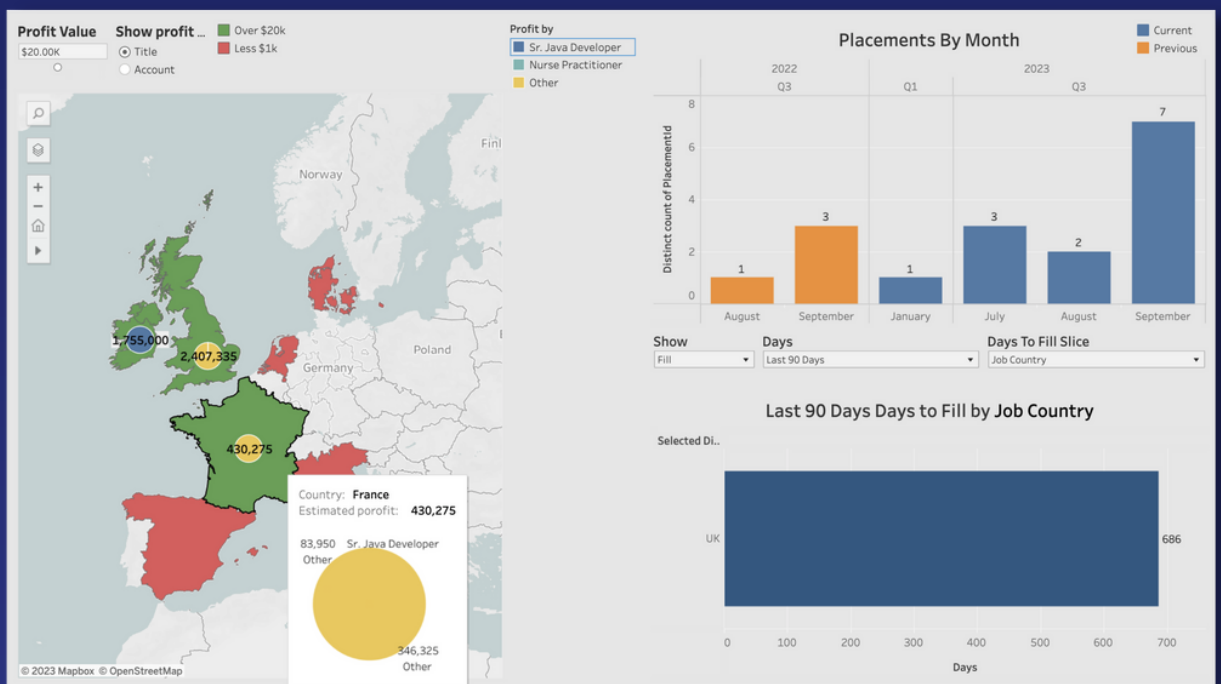
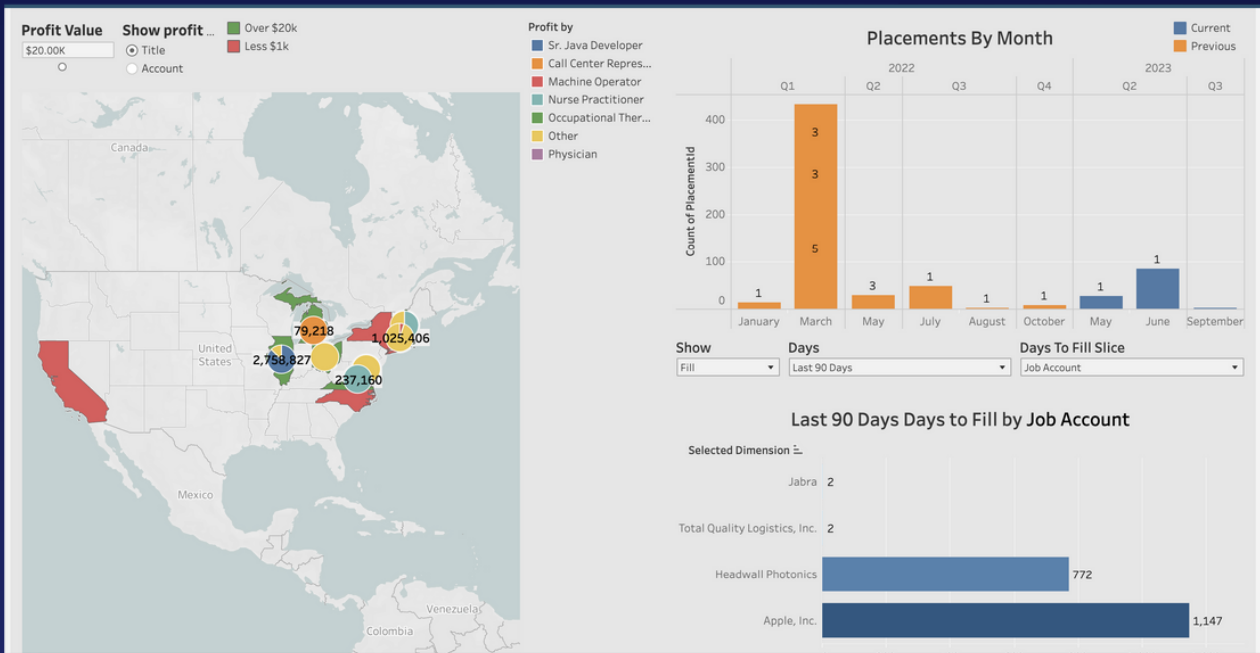


Empowering Your Business Intelligence

Tableau from Salesforce is a powerful business intelligence and analytics software that seamlessly connects to your TargetRecruit data, as well as other data sources. You can create compelling visualizations of your data that provide actionable, real-time insights into your business.



Why Choose Tableau: The Business Benefits

Full Information Availability

Tableau seamlessly integrates with TargetRecruit, allowing Tableau reports and dashboards to be embedded directly within the TargetRecruit application. More importantly, Tableau has the capability to access data from all relevant sources, not limited to what resides in TargetRecruit alone. This means your management team can have access to comprehensive information for making strategic decisions.

Self-Service Analysis and Visualization

Tableau democratizes data analysis by focusing on user-friendliness. It empowers non-IT users to independently analyze and visualize data, fostering data-driven decision-making across your organization and replacing gut-feel decisions with data-backed insights.

Data Blending

Tableau excels in combining data across multiple Salesforce products and other data sources. For example, it can effortlessly display marketing engagements and pipeline growth on the same chart.

Knowledge and Skill Sharing

Tableau has no data limitations and can serve as the standard tool for all departments, ensuring seamless knowledge and skill sharing.

TargetRecruit Reports & Dashboards vs. Tableau



TARGETRECRUIT REPORTS & DASHBOARDS

VS

TABLEAU

- ✓ Go-to option for quick wins based on real-time data
- ✓ Ideal for TargetRecruit users
- ✓ Native integration with TargetRecruit, requiring no additional setup
- ✓ Quick to configure and intuitive

- ✓ Enables exploration and sharing across a broad range of data & use cases
- ✓ Suitable for both TargetRecruit & non-TargetRecruit users
- ✓ Offers simple, quick integration to ingest data
- ✓ Requires Tableau expertise for optimal utilization

Incorporating Tableau into your data strategy ensures not just insights but actionable intelligence. Elevate your decision-making processes with Tableau + TargetRecruit and experience the true potential of your data.



Enterprise Software for Staffing & Recruiting Firms
Built on Salesforce